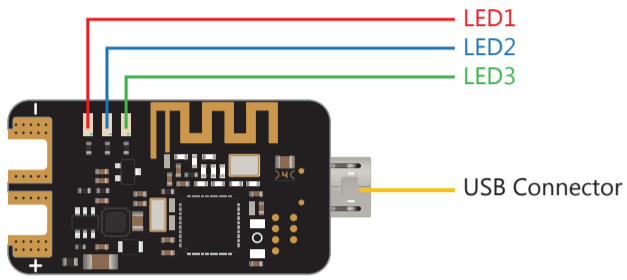


## Bluetooth-USB Adapter User Manual

### ◆ Instruction Diagram



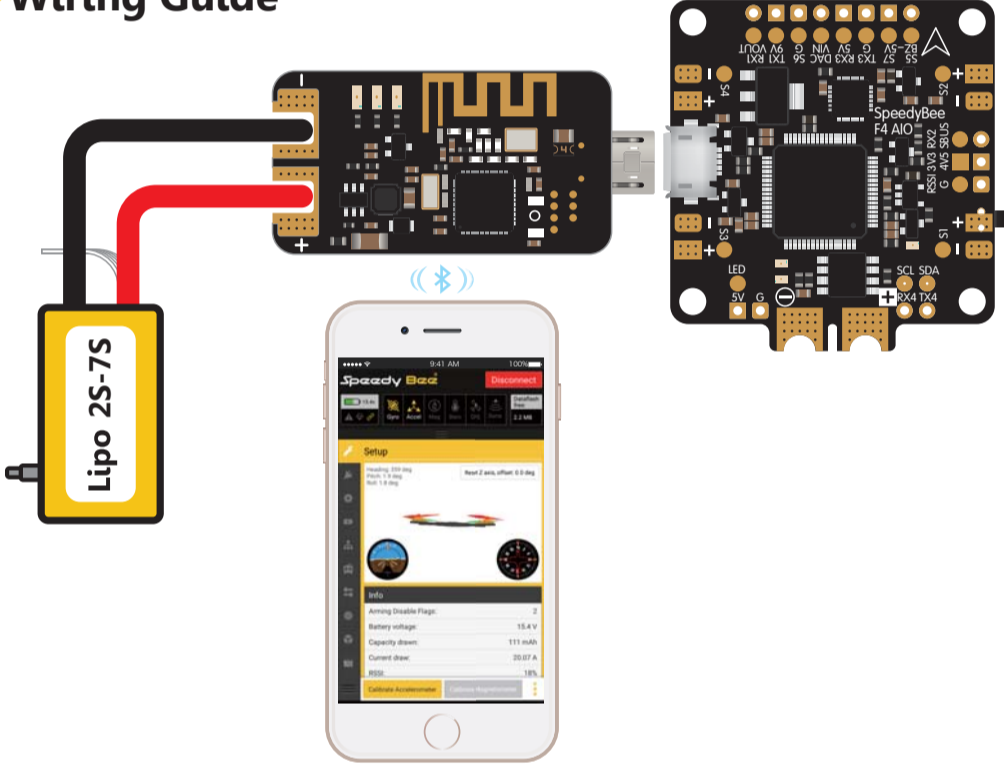
**Power:** Input voltage 2S~7S LiPo battery (6-30V)  
USB Connector

1. Puissance Output Max. 500mA/5V
2. Compatible with STM32/Cp21xx serial driver

LED indicators

- LED1:** Power Indicator - Red (Powering)
- LED2:** USB connection indicator - Blue  
(Constantly on when connected successfully with the FC)
- LED3:** Bluetooth connection indicator - Green  
(Constantly on when connected successfully with the APP)

### ◆ Wiring Guide



### ◆ APP instructions

Android | iOS  
Search 'Speedy Bee' on Google Play/App Store, or download on our website: <https://www.speedybee.com/download>

Connect with the APP  
Open APP, click Search, you will see the Bluetooth starting with "SBBUA\_", select your Bluetooth and then you will enter the APP.

